



GRADUATE ADMISSIONS STATISTICS

ENTRY 2023–24

www.ox.ac.uk/grad-stats



UNIVERSITY OF
OXFORD

GRADUATE ADMISSIONS STATISTICS

The data in this document pertains to individuals who submitted an application for admission to graduate programmes starting in the academic year 2023-24.

The University of Oxford's graduate programmes can be generally categorised as research or taught. Research programme participants, typically pursuing a DPhil, undertake research supervised by an academic mentor with whom they have regular meetings. Supervisors offer guidance on the specific project, research nature, data collection methods, and expected standards. As part of their research degree, students often take courses on specialised research skills, attend seminars, and lectures. Taught programmes, usually at the master's level, typically involve core and optional courses, culminating in a dissertation. Assessment methods may include coursework, examinations, and a dissertation. Seminars and lectures support the study process. Offer figures encompass all conditional or unconditional offers extended by academic departments or faculties.

CONTENTS	Page
Divisions, departments and faculties	2
Worldwide distribution of applications	4
Sex	5
Disability background	6
Ethnic background	6
College	7

Departments and faculties are grouped into four academic divisions and the Department for Continuing Education. Acceptance figures indicate the number of candidates who have fulfilled all conditions and are set to enrol. All graduate students, except those on non-matriculated courses, belong to both a department or faculty and a college, hall or society. Candidates could apply for more than one graduate programme per year, leading to a higher number of applications than the individuals applying in any given year.

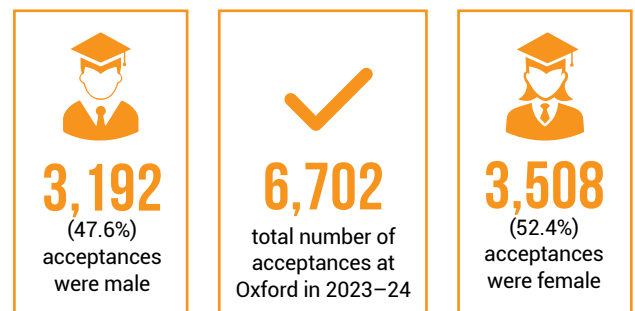
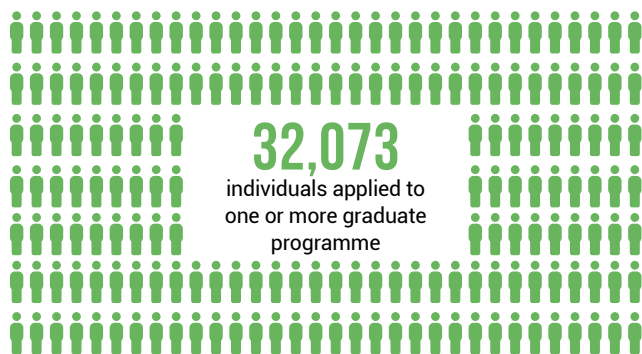
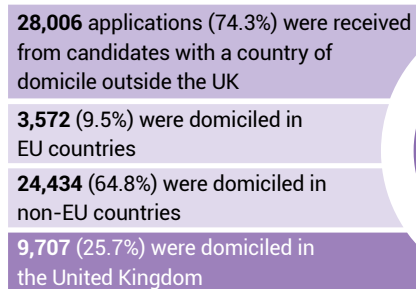
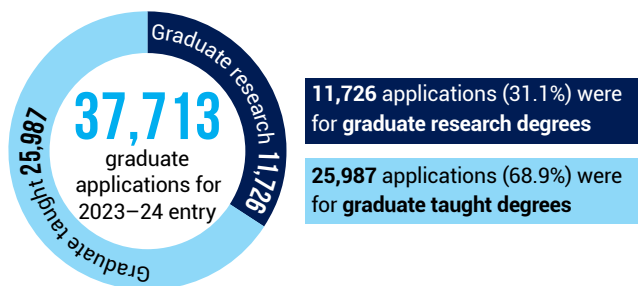


Figure 1a.

Division	Applications	Offers	Acceptances
Social Sciences	17,168	5,195	3,215
Humanities	4,649	1,528	894
Mathematical, Physical and Life Sciences	8,434	2,025	1,132
Medical Sciences	5,728	1,397	912
Department for Continuing Education	1,734	733	549
TOTAL	37,713	10,878	6,702

DIVISIONS, DEPARTMENTS AND FACULTIES

Figure 1b. Graduate research applications by division

Division	Applications	Offers	Acceptances
Social Sciences	2,460	665	359
Humanities	1,174	454	211
Mathematical, Physical and Life Sciences	4,918	1,147	620
Medical Sciences	3,024	737	515
Department for Continuing Education	150	25	23
TOTAL	11,726	3,028	1,728

Figure 1c. Graduate taught applications by division

Division	Applications	Offers	Acceptances
Social Sciences	14,708	4,530	2,856
Humanities	3,475	1,074	683
Mathematical, Physical and Life Sciences	3,516	878	512
Medical Sciences	2,704	660	397
Department for Continuing Education	1,584	708	526
TOTAL	25,987	7,850	4,974

Figure 1d. Graduate research and taught applications by department or faculty

Department/faculty	Research			Taught		
	Apps	Offers	Accept	Apps	Offers	Accept
SOCIAL SCIENCES DIVISION						
Anthropology & Museum Ethnography	131	49	17	346	137	91
Archaeology	70	44	22	150	88	54
Blavatnik School of Government	144	8	8	1,017	241	153
Economics	158	46	22	701	223	93
Education	191	67	42	1,624	602	409
Geography and the Environment	166	64	40	1,493	203	147
Global and Area Studies	78	23	11	576	277	167
International Development	139	29	14	1,278	259	143
Law	629	149	92	2,068	519	374
Oxford Internet Institute	175	27	19	708	118	81
Politics and International Relations	300	105	41	607	136	90
Saïd Business School	137	17	8	3,396	1,531	945
Social Policy and Intervention	78	18	12	507	116	62
Sociology	64	19	11	237	80	47
Social Sciences total	2,460	665	359	14,708	4,530	2,856
HUMANITIES DIVISION						
Ancient History & Classical Archaeology	17	15	4	58	25	20
Asian and Middle Eastern Studies	82	27	14	319	101	65
Classical Languages & Literature	37	33	14	89	73	40
English	230	80	32	593	135	90
History	337	139	64	867	266	178
Interdisciplinary				482	94	58
Linguistics, Philology and Phonetics	33	7	4	138	50	31
Medieval & Modern Languages	70	50	23	124	93	61
Music	33	15	8	93	51	28
Philosophy	144	46	22	338	67	33
Ruskin School of Art	95	4	4	180	28	20
Theology & Religion	96	38	22	194	91	59
Humanities total	1,174	454	211	3,475	1,074	683

DIVISIONS, DEPARTMENTS AND FACULTIES CONTINUED

Department/faculty	Research			Taught		
	App	Offers	Accept	App	Offers	Accept
MATHEMATICAL, PHYSICAL AND LIFE SCIENCES DIVISION						
Biology	246	91	40			
Chemistry, of which						
Chemical Biology	36	10	6			
Inorganic Chemistry	183	71	39			
Organic Chemistry	173	50	27			
Computer Science	565	125	56	928	194	143
Earth Sciences	68	27	11			
Engineering Science	1,028	269	158	283	52	43
Materials	227	69	34			
Mathematical Institute	641	123	55	1,640	499	242
Physics, of which						
Astrophysics	170	18	13			
Atmospherics, Oceanic and Planetary Physics	32	4	4			
Atomic & Laser Physics	108	32	17			
Condensed Matter Physics	92	32	14			
Particle Physics	83	21	17			
Theoretical Physics	238	12	10			
Physical & Theoretical Chemistry	63	43	23	66	24	18
Statistics	308	36	16	599	109	66
Doctoral Training Centre	657	114	80			
Mathematical, Physical and Life Sciences total	4,918	1,147	620	3,516	878	512
MEDICAL SCIENCES						
Biochemistry	211	48	21			
Clinical Medicine	387	84	67	771	218	89
Clinical Neurosciences	142	53	31	34	30	21
Clinical Psychology - DCLinPsych	18	14	14			
Doctoral Training Centre	722	65	56			
Experimental Psychology	137	87	71	248	24	19
Neuroscience				310	43	22
Oncology	233	46	27	136	76	64
Orthopaedics, Rheumatology and Musculoskeletal Sciences	185	26	22			
Paediatrics	33	18	16	8	6	5
Pathology	206	23	18			
Pharmacology	37	13	6	134	37	21
Physiology, Anatomy, and Genetics	70	52	35			
Population Health	195	37	27	516	54	44
Primary Care	100	31	21	226	77	56
Psychiatry	107	54	27	133	27	17
Radcliffe Department of Medicine	178	51	31			
Surgical Sciences	17	11	9	109	35	16
Women's and Reproductive Health	46	24	16	79	33	23
Medical Sciences total	3,024	737	515	2,704	660	397
DEPARTMENT FOR CONTINUING EDUCATION	150	25	23	1,584	708	526
Overall total	11,726	3,028	1,728	25,987	7,850	4,974

WORLDWIDE DISTRIBUTION OF APPLICATIONS

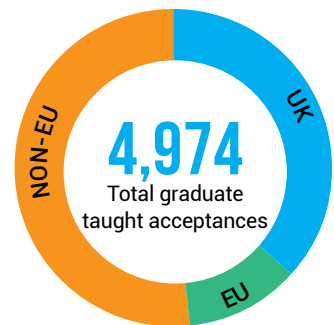
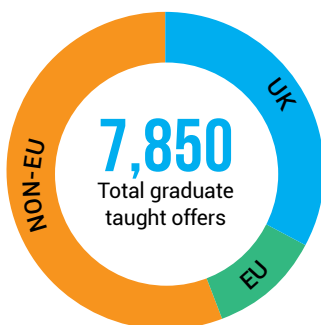
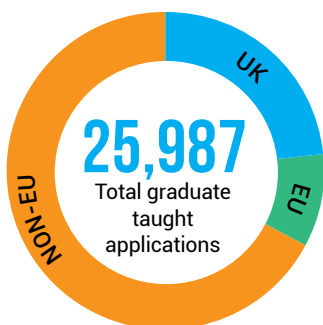
Figure 2a. Applications, offers and acceptances by country of domicile

Division		UK			EU			Non-EU		
		Apps	Offers	Accept	Apps	Offers	Accept	Apps	Offers	Accept
SOCIAL SCIENCES	Research	534	223	123	273	96	50	1,653	346	186
	Taught	2,939	1,208	839	1,338	459	292	10,431	2,863	1,725
	TOTAL	3,473	1,431	962	1,611	555	342	12,084	3,209	1,911
HUMANITIES	Research	434	210	112	139	73	19	601	171	80
	Taught	1,137	455	307	274	99	69	2,064	520	307
	TOTAL	1,571	665	419	413	172	88	2,665	691	387
MPLS	Research	1,525	418	266	597	169	86	2,796	560	268
	Taught	796	252	178	431	179	102	2,289	447	232
	TOTAL	2,321	670	444	1,028	348	188	5,085	1,007	500
MEDICAL SCIENCES	Research	1,121	368	282	202	54	26	1,701	315	207
	Taught	495	160	116	173	56	45	2,036	444	236
	TOTAL	1,616	528	398	375	110	71	3,737	759	443
CONTINUING EDUCATION	Research	31	10	9	10	1	1	109	14	13
	Taught	695	376	307	135	55	40	754	277	179
	TOTAL	726	386	316	145	56	41	863	291	192
All graduate research		3,645	1,229	792	1,221	393	182	6,860	1,406	754
All graduate taught		6,062	2,451	1,747	2,351	848	548	17,574	4,551	2,679
TOTAL		9,707	3,680	2,539	3,572	1,241	730	24,434	5,957	3,433

Graduate research totals:



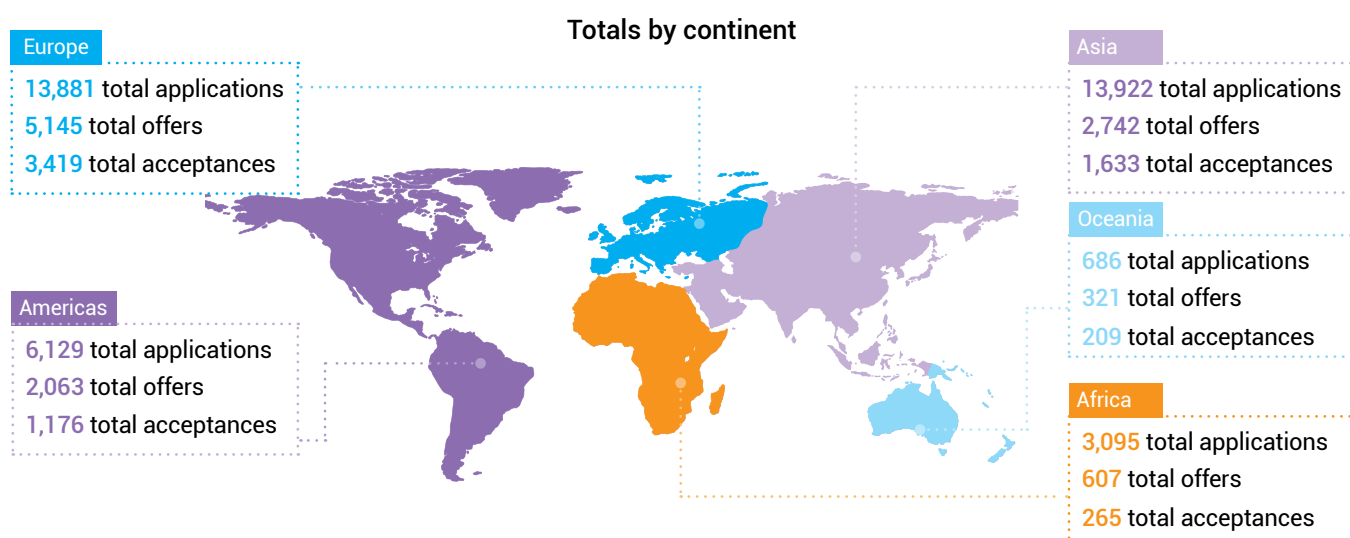
Graduate taught totals:



WORLDWIDE DISTRIBUTION OF APPLICATIONS CONTINUED

Figure 2b. Applications, offers and acceptances by domicile continent and programme type

Continent	Research			Taught			All		
	Apps	Offers	Accept	Apps	Offers	Accept	Apps	Offers	Accept
Africa	610	73	38	2,485	534	227	3,095	607	265
Americas	1,604	454	228	4,525	1,609	948	6,129	2,063	1,176
Asia	4,237	733	396	9,685	2,009	1,237	13,922	2,742	1,633
Europe	5,064	1,686	1,012	8,817	3,459	2,407	13,881	5,145	3,419
Oceania	211	82	54	475	239	155	686	321	209
TOTAL	11,726	3,028	1,728	25,987	7,850	4,974	37,713	10,878	6,702



SEX*

Figure 3. Applications, offers and acceptances by sex, division and programme type

Division		Female			Male		
		Apps	Offers	Accept	Apps	Offers	Accept
SOCIAL SCIENCES	Research	1,273	344	181	1,187	321	178
	Taught	7,752	2,379	1,566	6,475	2,070	1,288
	TOTAL	9,025	2,723	1,747	7,662	2,391	1,466
HUMANITIES	Research	604	231	117	570	223	94
	Taught	2,150	619	385	1,325	455	298
	TOTAL	2,754	850	502	1,895	678	392
MPLS	Research	1,523	388	223	3,395	759	397
	Taught	1,082	262	153	2,434	616	359
	TOTAL	2,605	650	376	5,829	1,375	756
MEDICAL SCIENCES	Research	1,825	462	329	1,199	275	186
	Taught	1,691	378	247	1,013	282	150
	TOTAL	3,516	840	576	2,212	557	336
CONTINUING EDUCATION	Research	83	13	12	67	12	11
	Taught	954	381	295	630	327	231
	TOTAL	1,037	394	307	697	339	242
All graduate research		5,308	1,438	862	6,418	1,590	866
All graduate taught		13,629	4,019	2,646	11,877	3,750	2,326
TOTAL		18,937	5,457	3,508	18,295	5,340	3,192

* Data excludes a number of PGCE records where the sex of the applicant is not known

DISABILITY BACKGROUND

Figure 4. Applications, offers and acceptances by division and programme type: candidates with a declared disability

Division		One or more disabilities		
		Applications	Offers	Acceptances
SOCIAL SCIENCES	Research	291	114	70
	Taught	1,334	520	394
	TOTAL	1,625	634	464
HUMANITIES	Research	232	106	56
	Taught	606	238	171
	TOTAL	838	344	227
MPLS	Research	511	134	81
	Taught	230	95	74
	TOTAL	741	229	155
MEDICAL SCIENCES	Research	378	105	78
	Taught	268	79	59
	TOTAL	646	184	137
CONTINUING EDUCATION	Research	17	4	3
	Taught	265	113	83
	TOTAL	282	117	86
All graduate research		1,429	463	288
All graduate taught		2,703	1,045	781
TOTAL		4,132	1,508	1,069

ETHNIC BACKGROUND

Figure 5a. Applications, offers and acceptances by ethnic group (all domiciles)

Ethnic group	Research			Taught			All		
	Apps	Offers	Accept	Apps	Offers	Accept	Apps	Offers	Accept
Asian	4,888	906	502	11,092	2,537	1,559	15,980	3,443	2,061
Black	725	107	67	2,604	619	301	3,329	726	368
Mixed	668	193	110	1,557	536	351	2,225	729	461
Other	638	123	69	1,227	343	228	1,865	466	297
White	4,355	1,568	911	8,211	3,474	2,373	12,566	5,042	3,284
Not known	452	131	69	1,296	341	162	1,748	472	231
TOTAL	11,726	3,028	1,728	25,987	7,850	4,974	37,713	10,878	6,702

Figure 5b. Applications, offers and acceptances by ethnic group (UK domicile only)

Ethnic group	Research			Taught			All		
	Apps	Offers	Accept	Apps	Offers	Accept	Apps	Offers	Accept
Asian	715	162	104	1,332	403	293	2,047	565	397
Black	137	33	27	263	95	67	400	128	94
Mixed	226	78	47	418	182	142	644	260	189
Other	148	35	21	162	53	40	310	88	61
White	2,267	873	565	3,287	1,550	1,144	5,554	2,423	1,709
Not known	152	48	28	600	168	61	752	216	89
TOTAL	3,645	1,229	792	6,062	2,451	1,747	9,707	3,680	2,539

COLLEGES, SOCIETIES AND PERMANENT PRIVATE HALLS

Figure 6. Candidates accepting a graduate place by college, society or permanent private hall

Find out more about colleges, societies and permanent private halls including definitions at: www.ox.ac.uk/admissions/graduate/colleges

Non-matriculated

Students on certain graduate certificate and diploma programmes (mainly within the Department for Continuing Education) are not affiliated to a college and do not attend a matriculation ceremony to become members of the University.

COLLEGE/SOCIETY	Research	Taught	All
All Souls	-	-	-
Balliol	61	91	152
Brasenose	27	67	94
Christ Church	36	55	91
Corpus Christi	17	19	36
Exeter	53	88	141
Green Templeton	65	206	271
Harris Manchester	33	45	78
Hertford	50	52	102
Jesus	40	85	125
Keble	60	174	234
Kellogg	63	521	584
Lady Margaret Hall	44	110	154
Linacre	75	174	249
Lincoln	52	95	147
Magdalen	35	41	76
Mansfield	23	66	89
Merton	29	46	75
New	34	93	127
Nuffield	21	8	29
Oriel	12	87	99
Pembroke	17	73	90
Queen's	34	40	74
Reuben	66	161	227
St Anne's	44	112	156
St Antony's	47	243	290
St Catherine's	42	147	189
St Cross	90	239	329
St Edmund Hall	49	54	103
St Hilda's	43	89	132
St Hugh's	36	181	217
St John's	53	24	77
St Peter's	43	74	117
Somerville	43	101	144
Trinity	27	32	59
University	50	43	93
Wadham	40	63	103
Wolfson	125	199	324
Worcester	34	64	98
PERMANENT PRIVATE HALLS			
Blackfriars	5	31	36
Campion Hall	-	3	3
Regent's Park College	8	75	83
Wycliffe Hall	-	19	19
EXTERNAL COLLEGES			
Ripon College Cuddesdon	-	1	1
St Stephen's House	-	1	1
Non-matriculated	2	782	784
TOTAL	1,728	4,974	6,702



Further information

For information about the University of Oxford's graduate programmes, including detailed advice on how to apply, please see www.graduate.ox.ac.uk

More information on student numbers at the University of Oxford can be found at www.graduate.ox.ac.uk/studentstats